

## SECTION 7

### EXPLODED VIEWS

NOTE:

- -XX and -X mean standardized parts, so they may have some difference from the original one.

- Color Indication of Appearance Parts

Example:

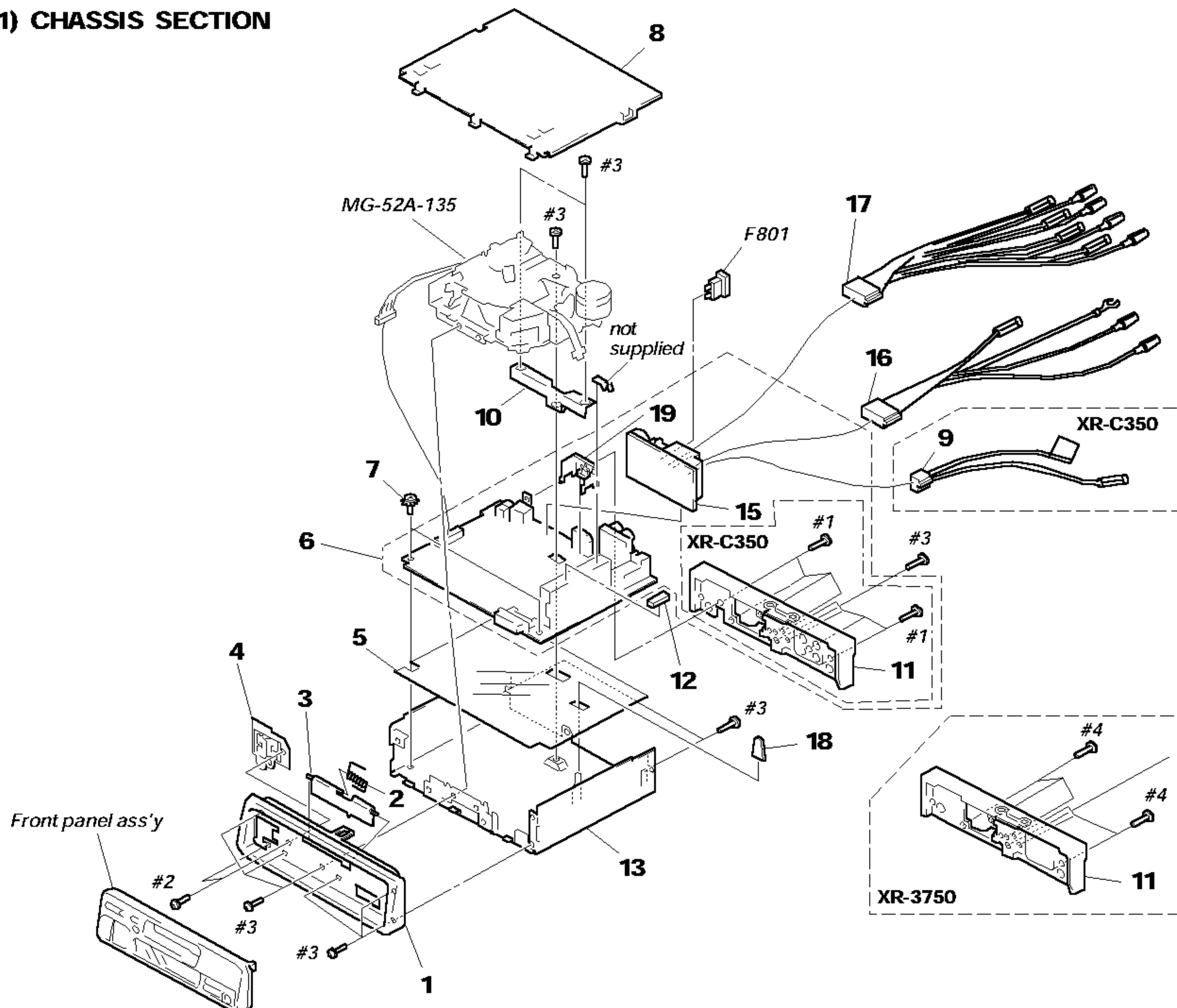
KNOB, BALANCE (WHITE) . . . (RED)

↑                      ↑

Parts Color    Cabinet's Color

- Items marked “\*” are not stocked since they are seldom required for routine service. Some delay should be anticipated when ordering these items.
- The mechanical parts with no reference number in the exploded views are not supplied.
- Hardware (# mark) list and accessories and packing materials are given in the last of the electrical parts list.

### (1) CHASSIS SECTION



Ref. No.	Part No.	Description	Remark	Ref. No.	Part No.	Description	Remark
1	3-009-294-01	PANEL, SUB		* 10	3-012-264-01	BRACKET (52)	
2	3-913-076-01	SPRING (C DOOR), TORSION (XR-C350)		* 11	3-009-293-01	HEAT SINK (XR-C350)	
2	3-935-003-01	SPRING, TORSION (XR-3750)		* 11	3-010-471-01	HEAT SINK (XR-3750)	
3	3-918-583-31	DOOR, CASSETTE (XR-C350)		12	9-911-840-XX	CUSHION (U)	
3	3-932-205-21	DOOR, CASSETTE (XR-3750)		* 13	3-009-813-01	CHASSIS (XR-3750)	
4	X-3367-636-1	LOCK ASSY		* 13	3-010-075-01	CHASSIS (XR-C350)	
* 5	3-010-376-01	INSULATOR (XR-3750)		* 15	A-3309-752-A	CONNECTOR BOARD, COMPLETE (XR-C350)	
* 5	3-011-295-01	INSULATOR (MAIN) (XR-C350)		* 15	A-3309-913-A	CONNECTOR BOARD, COMPLETE (XR-3750)	
* 6	A-3309-873-A	MAIN BOARD, COMPLETE (XR-C350: GREEN)		16	1-782-092-11	CORD (WITH CONNECTOR) (POWER)	
* 6	A-3309-874-A	MAIN BOARD, COMPLETE (XR-C350: AMBER)		17	1-782-093-11	CORD (WITH CONNECTOR) (SPEAKER)	
* 6	A-3309-911-A	MAIN BOARD, COMPLETE (XR-3750)		* 18	3-012-860-01	CAP (52), RUBBER (XR-C350)	
7	3-915-923-01	SCREW, GROUND POINT		* 19	3-009-816-01	BRACKET (IC) (ISO)	
* 8	X-3373-203-1	COVER ASSY (XR-C350)		F801	1-532-877-11	FUSE (BLADE TYPE) (AUTO FUSE) (10A)	
* 8	X-3373-269-1	COVER ASSY (XR-3750)					
9	1-777-989-11	CORD (WITH CONNECTOR) (AMP/TEL MUTE) (XR-C350)					