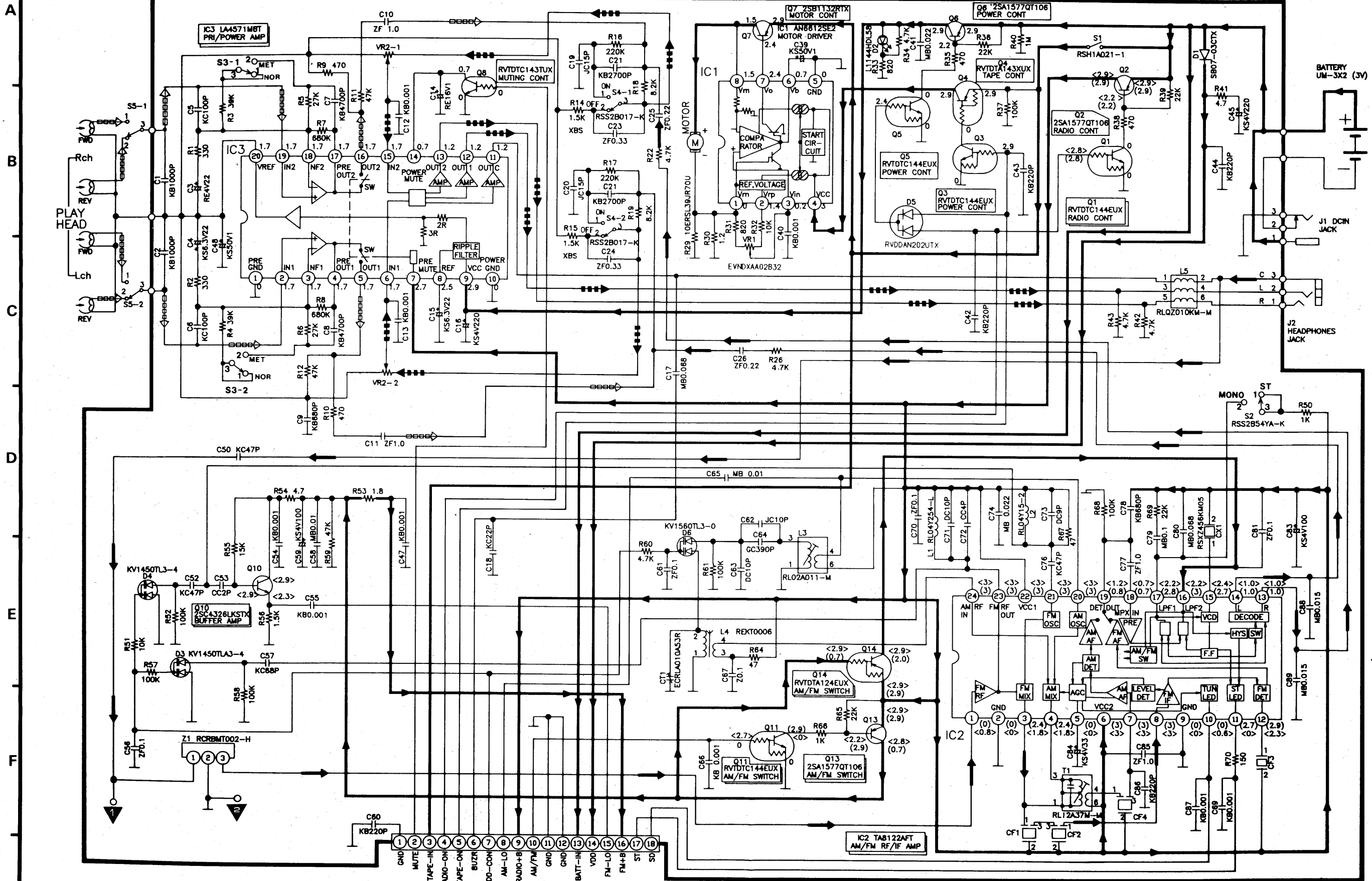


# RQ-V201 RQ-V201

## SCHEMATIC DIAGRAM



**SCHEMATIC DIAGRAM**

**LCD CIRCUIT**

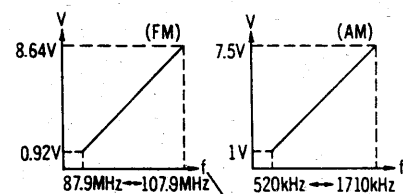
**Notes:**

- S1: Motor switch in "OFF" position.
- S2: FM mode switch in "ST" position.
- S3-1, 3-2: Tape selector switch in "NOR" position, (1...NOR, 2...CrO<sub>2</sub>/MET)
- S4-1, 4-2: XBS switch in "ON" position, (1...ON, 2...OFF)
- S5-1, 5-2: FWD/REV select switch in "REV" position, (1...FWD, 2...REV)
- S201: Hold switch in "OFF" position
- S202~206: Direct tuning switches. [S202: 1, S203: 2, S204: 3, S205: 4, S206: 5]
- S207: Band/Mode select (• FM/AM/MODE) switch in "OFF" position.
- S208: Tuning down switch in "OFF" position.
- S209: Tuning up switch in "OFF" position.
- S210: Radio ON/OFF switch in "OFF" position.
- VR1: Tape speed adjustment VR.
- VR2-1: Volume control VR (Rch).
- VR2-2: Volume control VR (Lch).
- The mark (▼) shows test point e.g. ▼ = test point 1.
- DC voltage measurement are taken with electronics voltmeter from negative terminal of battery.
- < >...FM position, ( )...AM position.
- No mark.....Playback position

- Battery current: Volume minimum output (Radio).....75mA
- Volume minimum output (Tape).....160mA
- Volume Maximum output (Radio).....125mA
- Volume Maximum output (Tape).....200mA
- (Radio, 74dB 30% Modulation.)
- (Tape, 315Hz 0dB tape playback)

- ➔ +B Voltage Line.
- ◻◻◻◻◻ Playback Signal.
- ➔ FM Signal.
- ▬▬▬▬▬ Playback and Radio Signal.

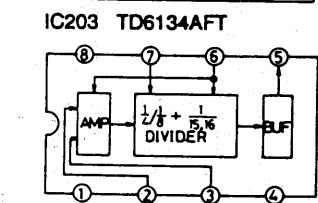
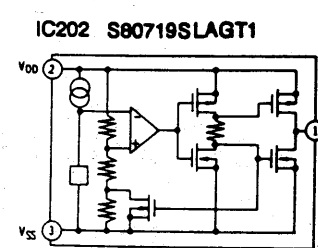
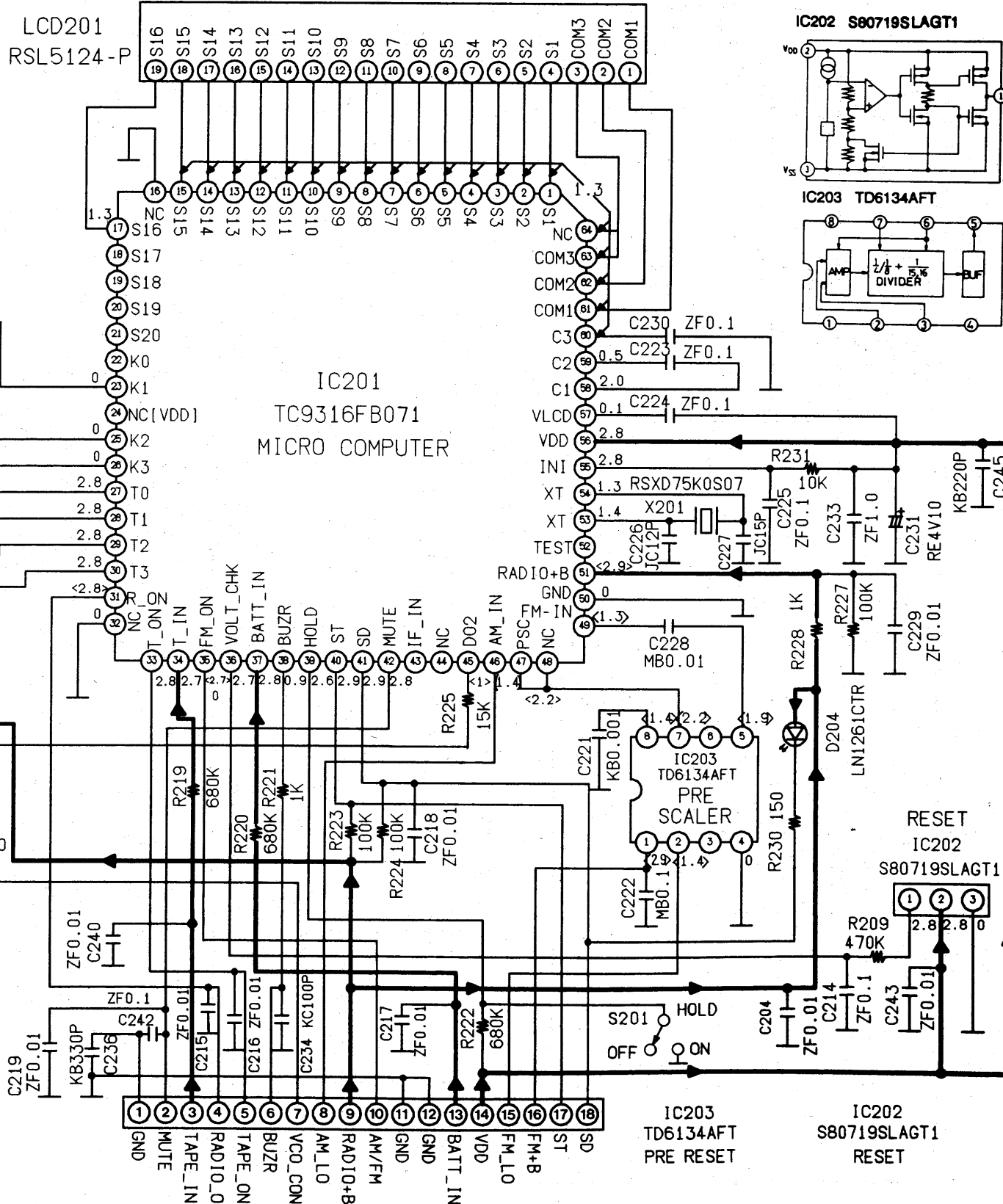
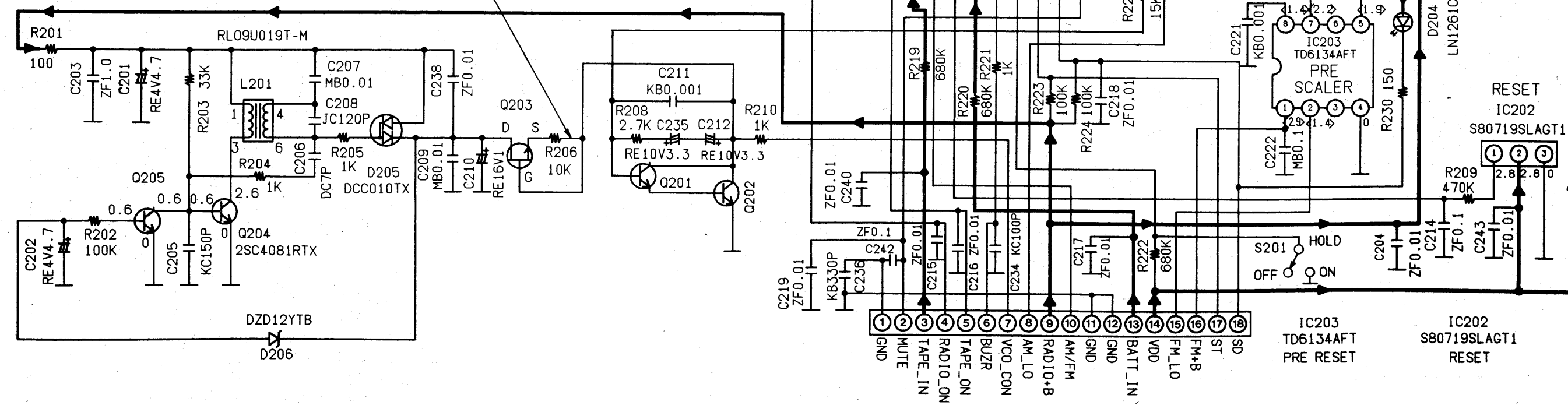
● This schematic diagram may be modified at any time with the development of new technology.



Q204, 205  
2SC4081RTX  
DC-DC CONV

Q203  
2SK303V3TB  
FET-STABILIZER

Q201, 202  
2SC4081RTX  
POWER SUPPLY CONT



IC203  
TD6134AFT  
PRE RESET

IC202  
S80719SLAGT1  
RESET