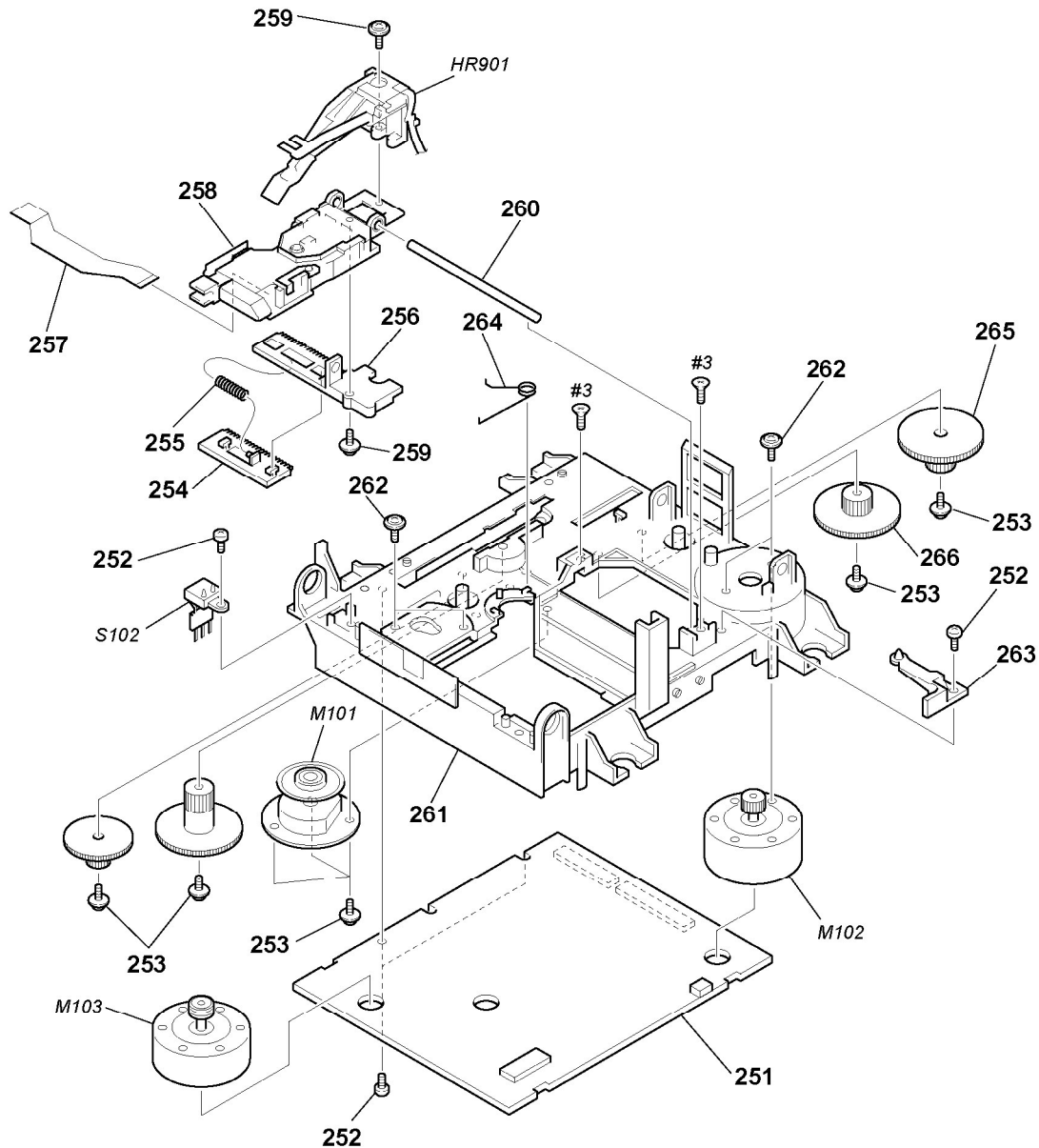


## 7-4. MECHANISM-1 SECTION (MDM-7A)



Ref. No.	Part No.	Description	Remarks	Ref. No.	Part No.	Description	Remarks
251	A-4725-054-A	BD BOARD, COMPLETE		262	4-211-036-01	SCREW (1.7X2.5), +PWH	
252	4-908-618-21	SCREW (+BTP) (2X6)		263	4-226-990-01	BASE (BU-A)	
253	3-372-761-01	SCREW (M1.7), TAPPING		264	4-227-023-01	SPRING (SPINDLE), TORSION	
254	4-226-993-01	RACK		265	4-227-004-01	GEAR (LC)	
255	4-227-014-01	SPRING (RACK), COMPRESSION		266	4-227-005-01	GEAR (LD)	
256	4-226-992-01	BASE, SL		M101	A-4672-898-A	MOTOR ASSY, SPINDLE	
257	1-678-514-11	PWB, FLEXIBLE		M102	A-4672-900-A	MOTOR ASSY, SLED	
△ 258	A-4672-541-A	OPTICAL PICK-UP KMS-260B/J1N		M103	A-4672-975-A	MOTOR ASSY, LOADING	
259	4-988-560-01	SCREW (+P 1.7X6)		S102	1-771-957-11	SWITCH, PUSH (2 KEY)	
260	4-996-265-01	SHAFT, MAIN		HR901	1-500-670-11	HEAD, OVER LIGHT	
261	4-226-989-01	CHASSIS					

The components identified by mark △ or dotted line with mark △ are critical for safety. Replace only with part number specified.

Les composants identifiés par une marque △ sont critiques pour la sécurité. Ne les remplacer que par une pièce portant le numéro spécifié.