

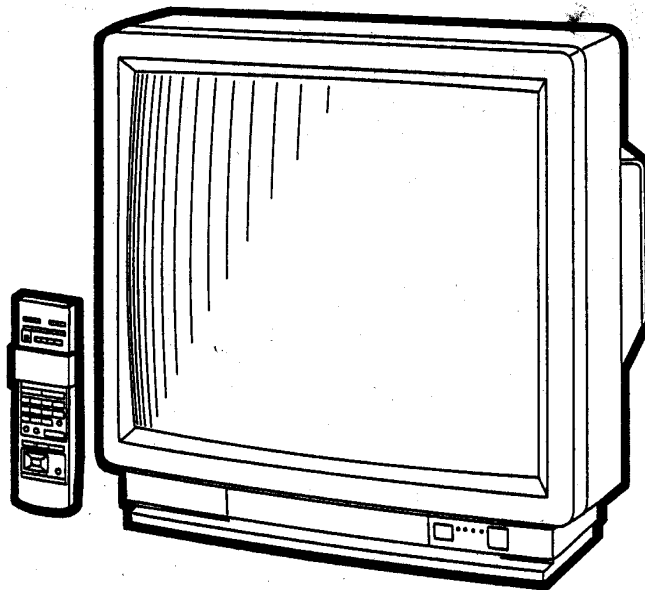
# JVC

## KUNDENDIENSTANLEITUNG

AV-25F1EG  
AV-28F1EG

GRUNDCHASSIS

JX



### INHALTSVERZEICHNIS

■ TECHNISCHE DATEN .....	2
■ SICHERHEITSVORKEHRUNGEN .....	3
■ BEDIENUNGSANWEISUNGEN .....	4
■ BESONDERE WARTUNGSANWEISUNGEN .....	30
■ LAGE DER WICHTIGSTEN TEILE .....	33
■ EINSTELLUNGEN .....	34
■ SCHEMATISCHE DARSTELLUNG (BEIGELEGT)	
■ ERSATZTEILE-LISTE .....	43

# 5. SCHEMAZEICHNUNGEN UND RÜCKMUSTER

## ■ HAUPT-LEITERPLATTE UND STEUER-LEITERPLATTE SCHEMAZEICHNUNGEN

MAIN PC BOARD ASS'Y No.

AV-25F1EG	(D)	SJX-1881A
AV-25F1EG	(E)	SJX-1891A
AV-28F1EG	(D)	SJX-1883A
AV-28F1EG	(E)	SJX-1893A

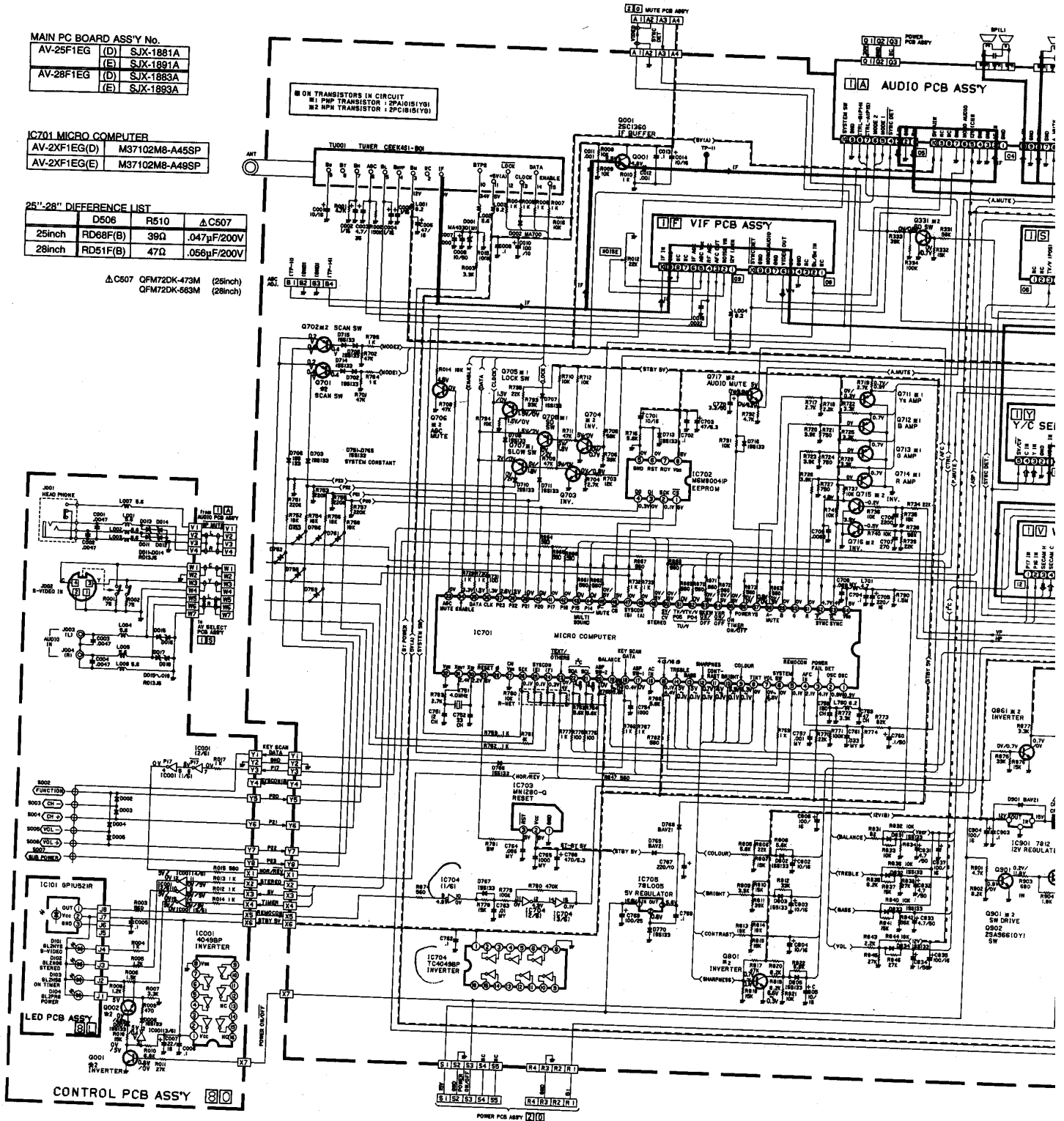
IC701 MICRO COMPUTER

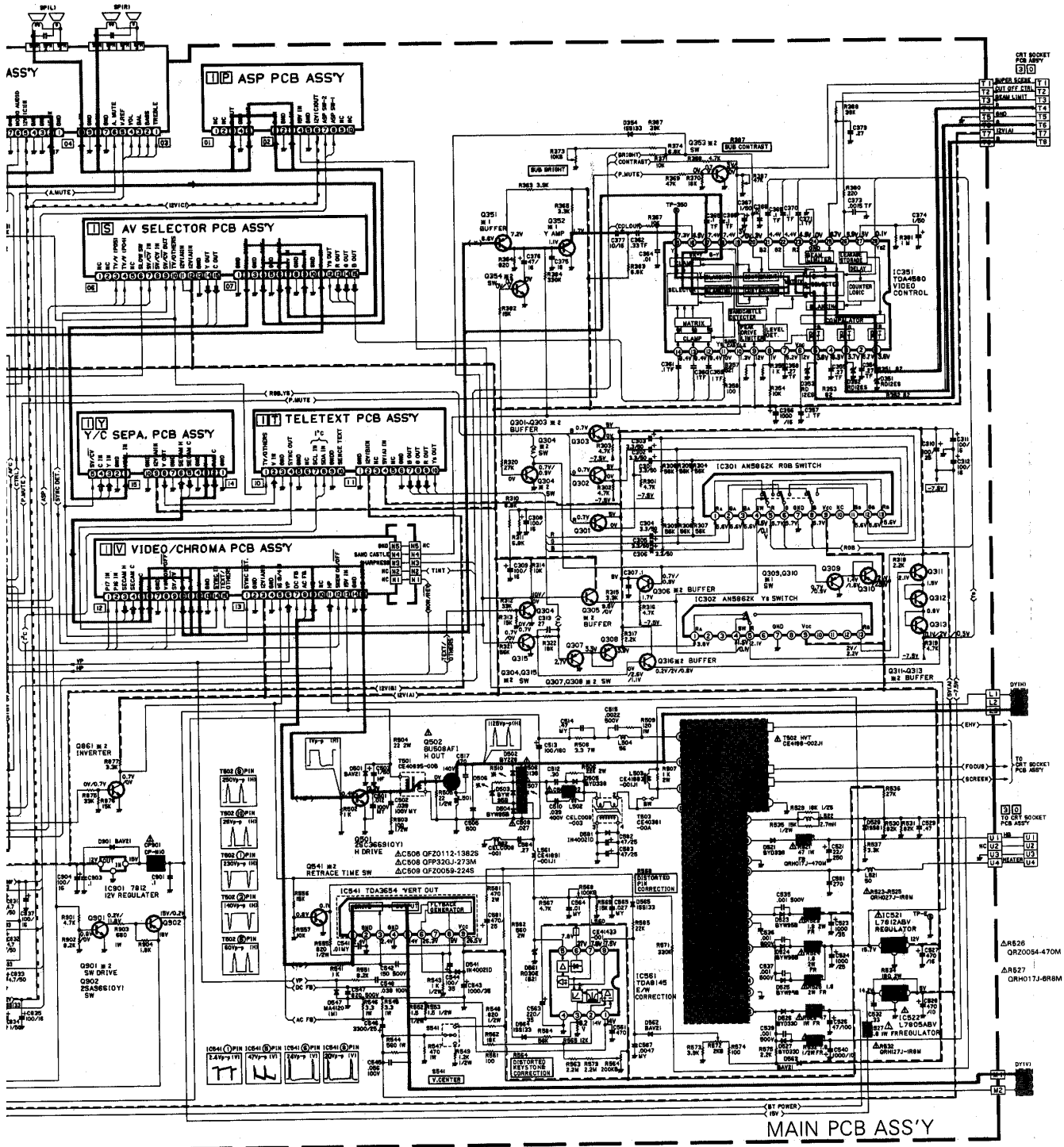
AV-25F1EG(D)	M37102M8-A45SP
AV-25F1EG(E)	M37102M8-A49SP

25"-28" DIFFERENCE LIST

	D508	R510	Δ C507
25inch	RD68F(B)	39Ω	.047μF/200V
28inch	RD51F(B)	47Ω	.056μF/200V

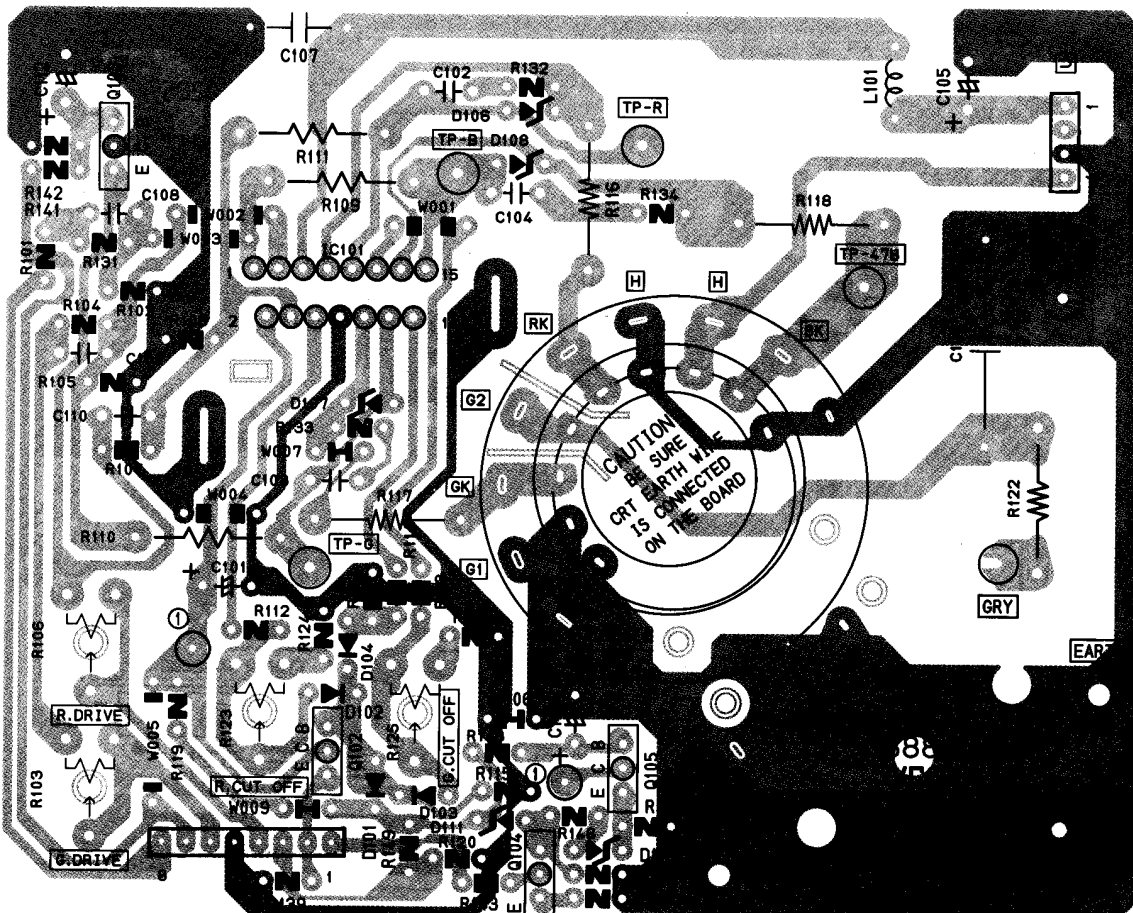
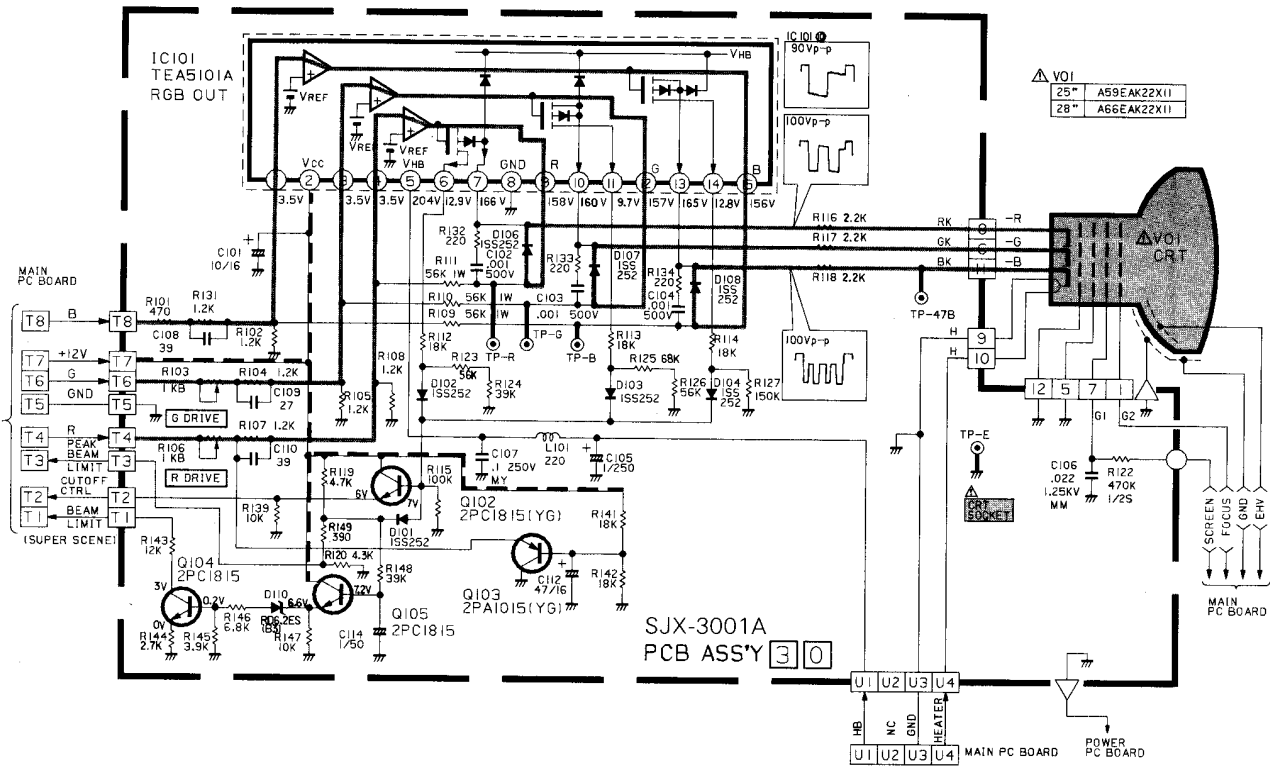
Δ C507 QFM72DK-473M (28inch)  
QFM72DK-563M (25inch)



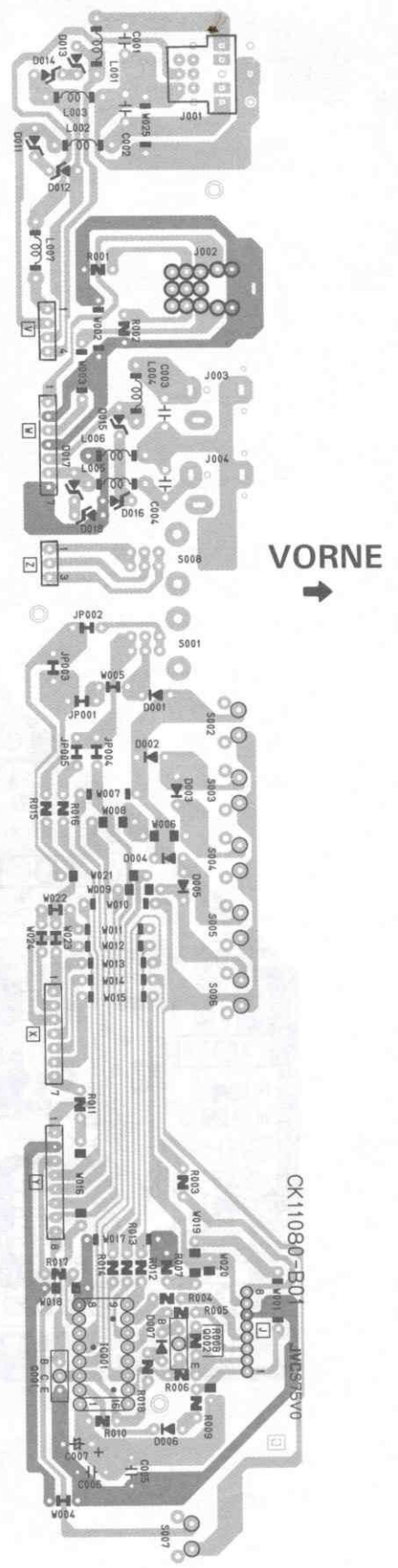
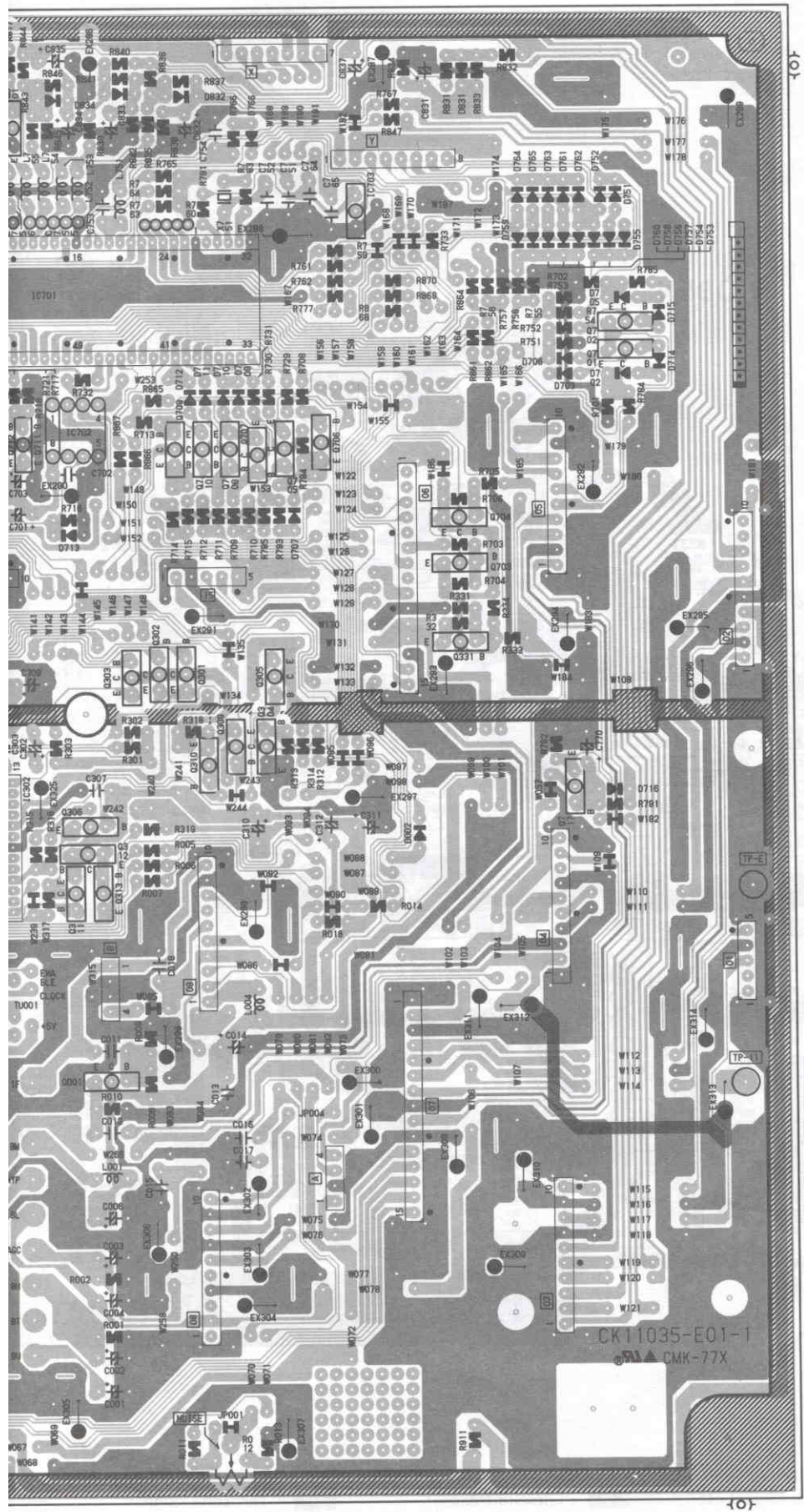


- VIF-L (VIF P)
- AF-SI (AV S)
- Y/C S (Y/C S)
- VIDE (VIDE)
- AUTI (AUDI)
- ASP- (ASP I)
- TELE (TELE)
- BETI (POW)

■ BILDÖHREN-STECKER-LEITERPLATE SCHEMAZEICHUNG UND RÜCKMUSTER



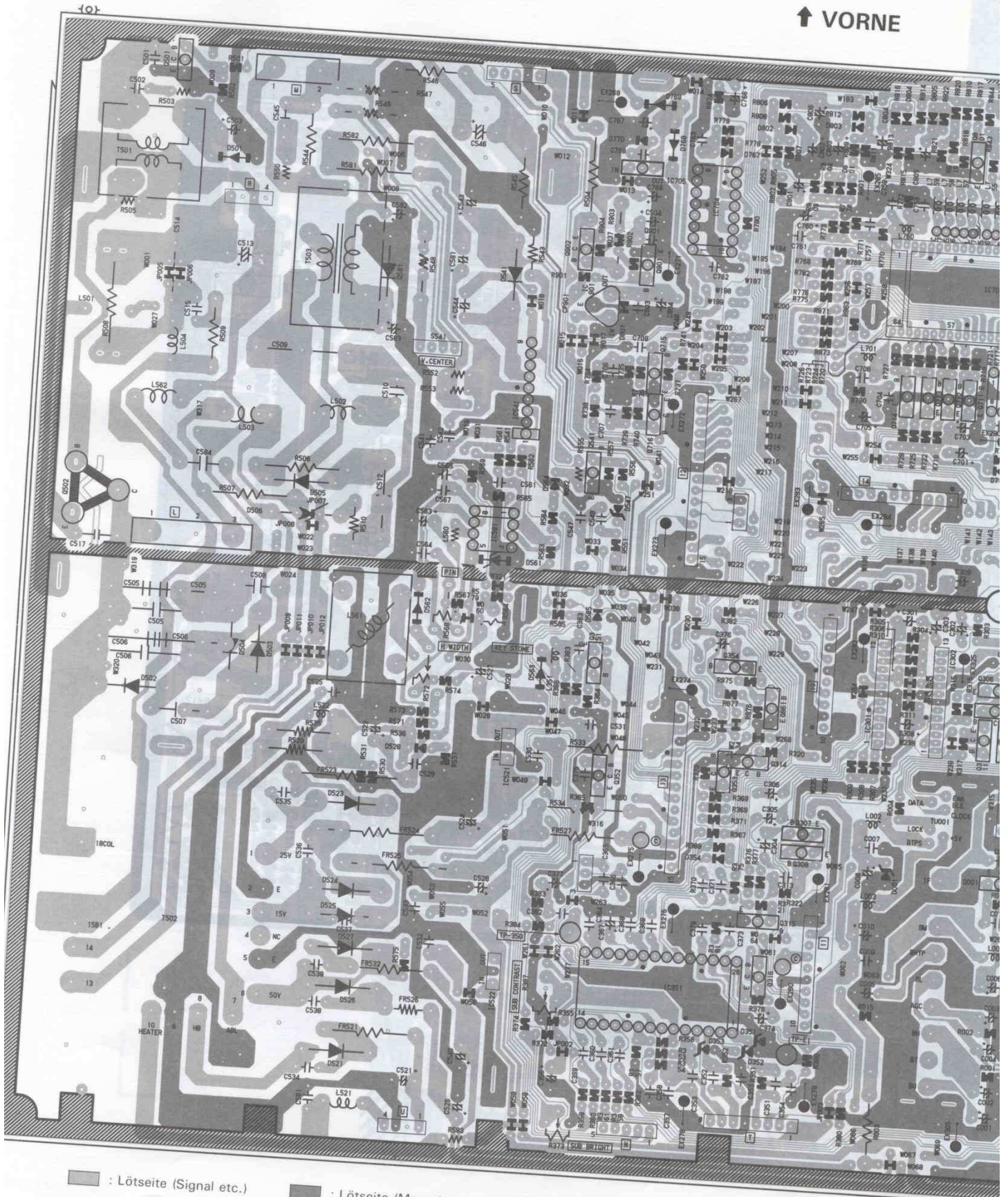
■ STEUER-LEITERPLATTE RÜCKMUSTER



HAUPT-LEITERPLATTE MUSTER

43P483/A  
43P483/A

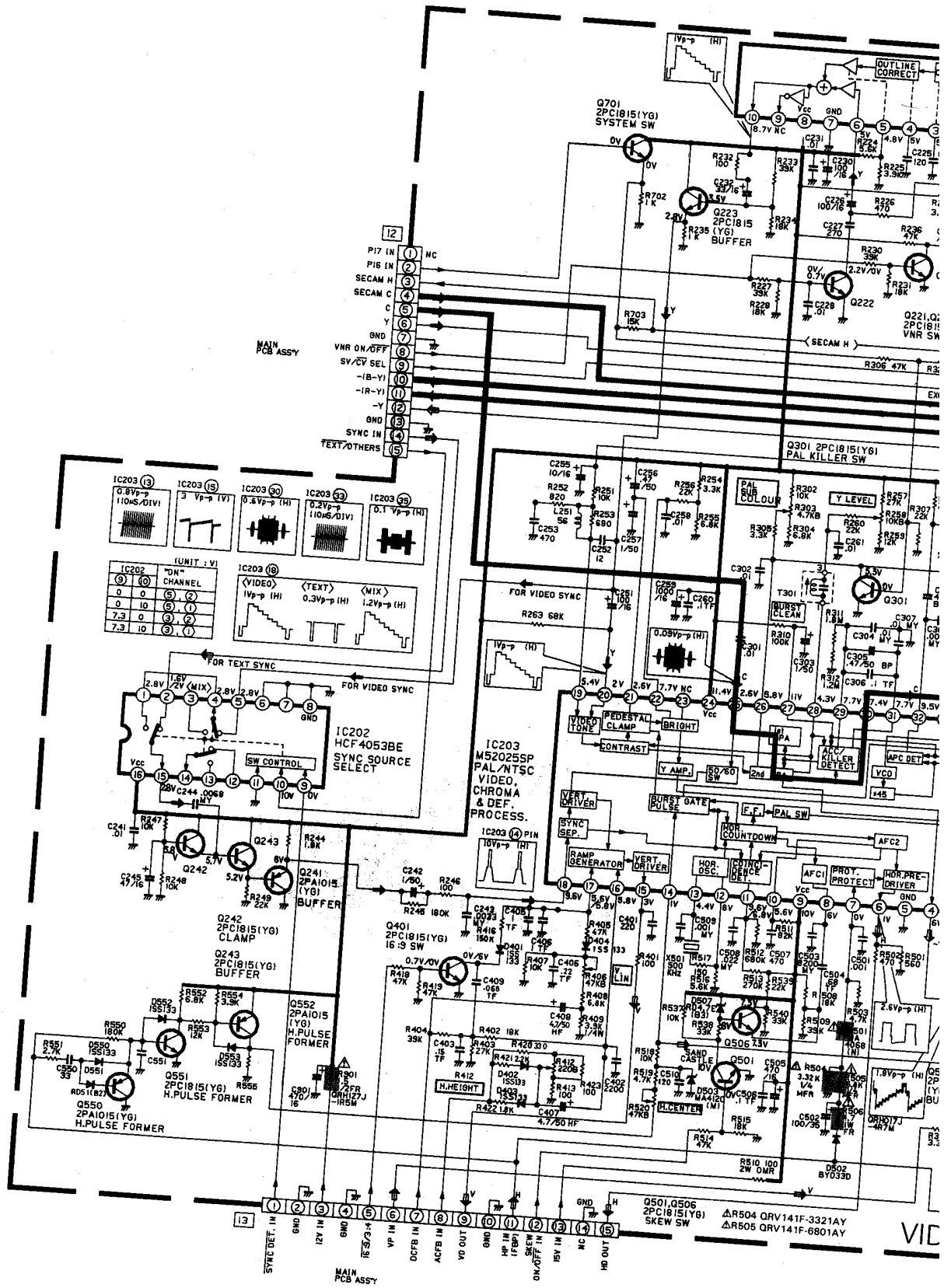
↑ VORNE

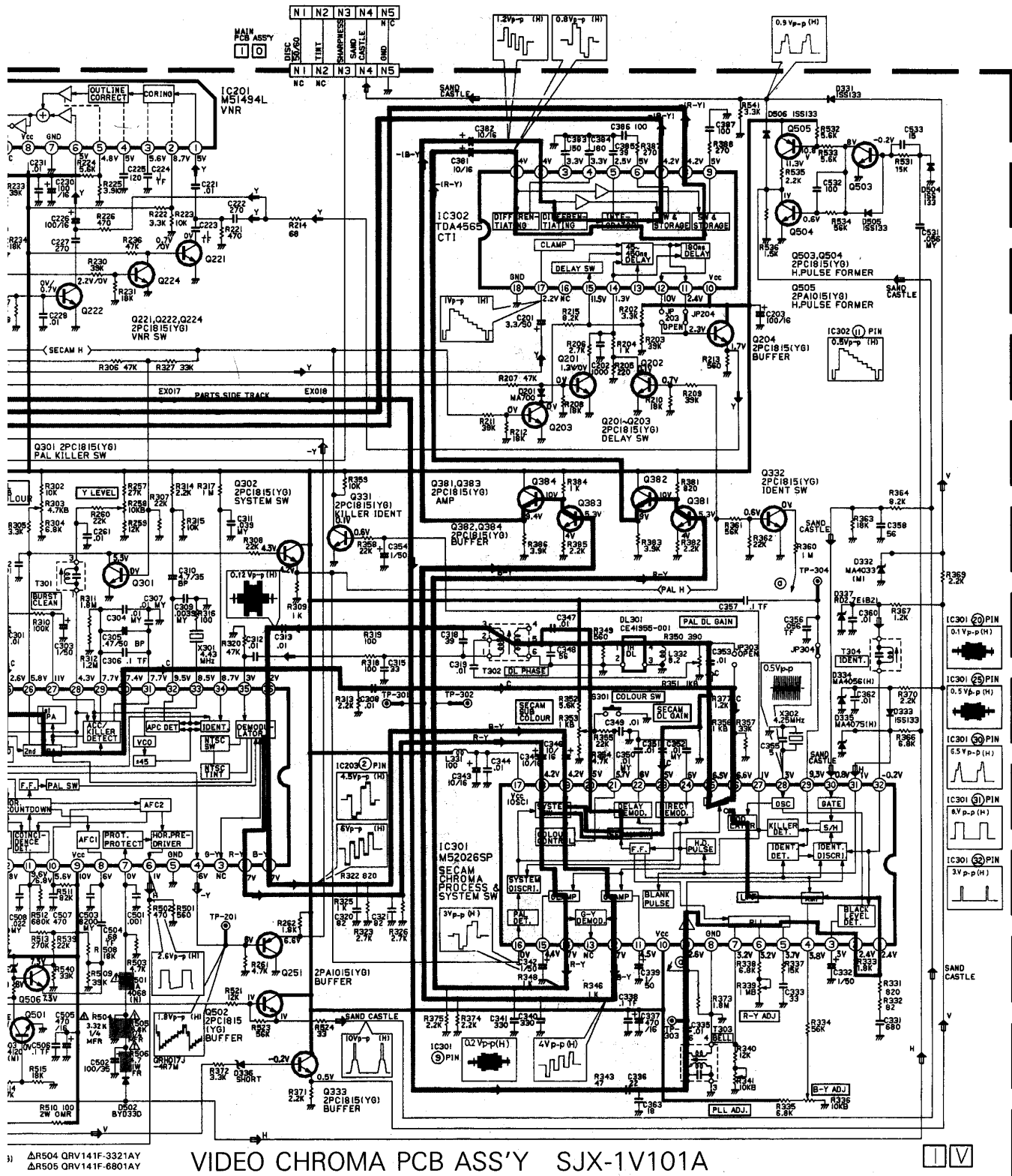


- : Lötseite (Signal etc.)
- : Lötseite (Masse)
- : Teilleite (Signal)

15 (MS)8042R

# VIDEO/CHROMA-LEITERPLATTE SCHEMADIAGRAMM





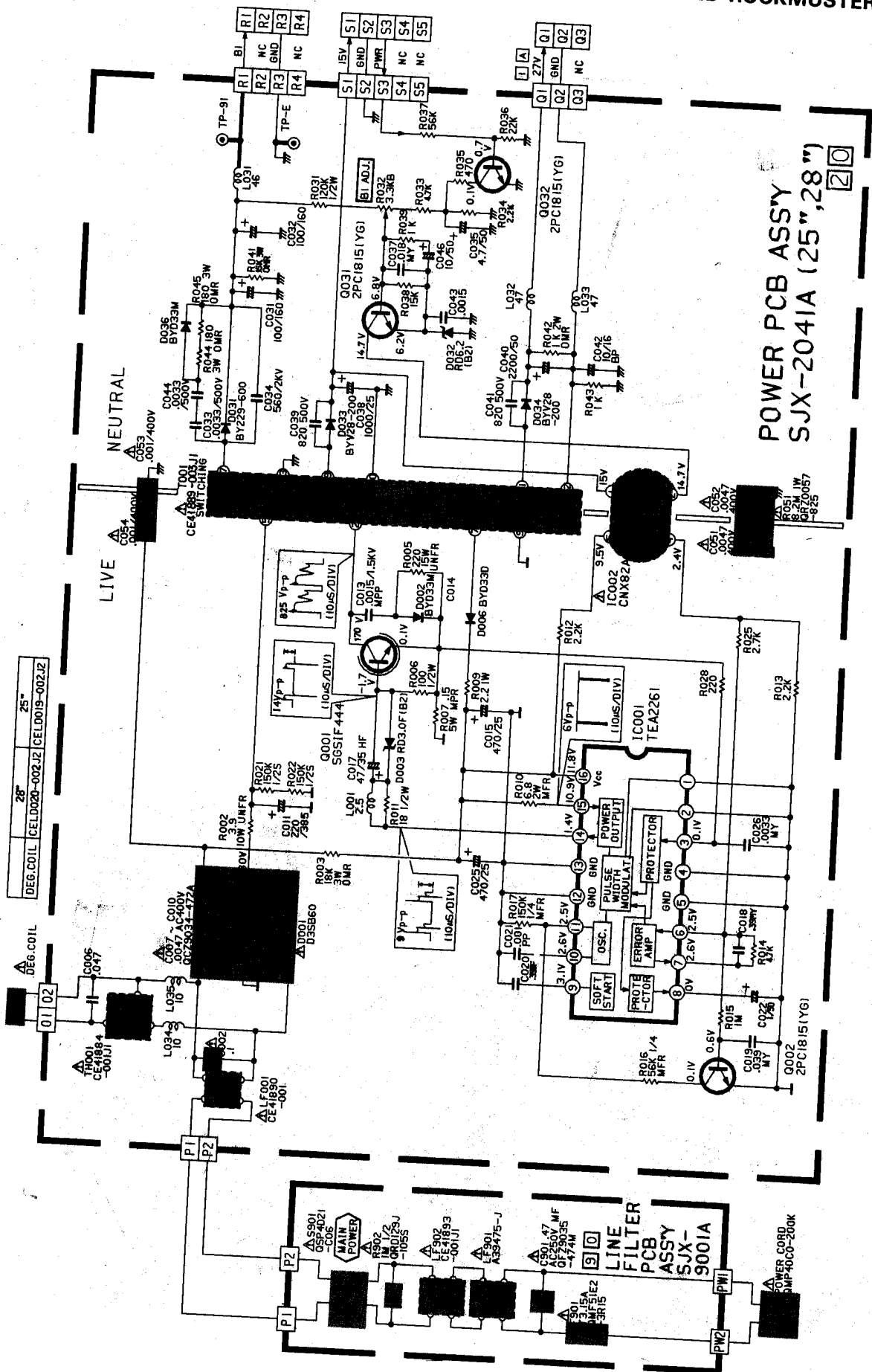
3) ΔR504 ORV141F-3321AY  
ΔR505 ORV141F-6801AY

VIDEO CHROMA PCB ASS'Y SJX-1V101A





BETRIEBSSTROMSTUFEN-LEITERPLATTE SCHEMADIAGRAMM UND RÜCKMUSTER



POWER PCB ASS'Y  
SJX-2041A (25" x 28")

