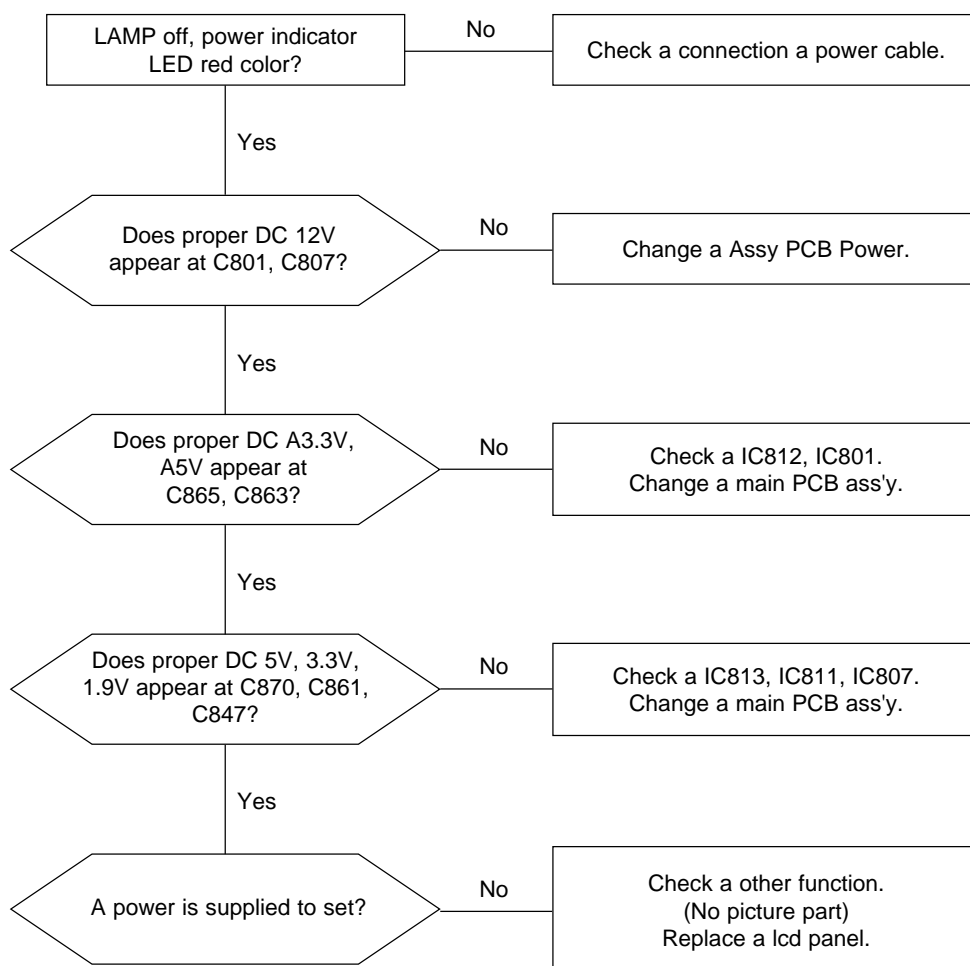
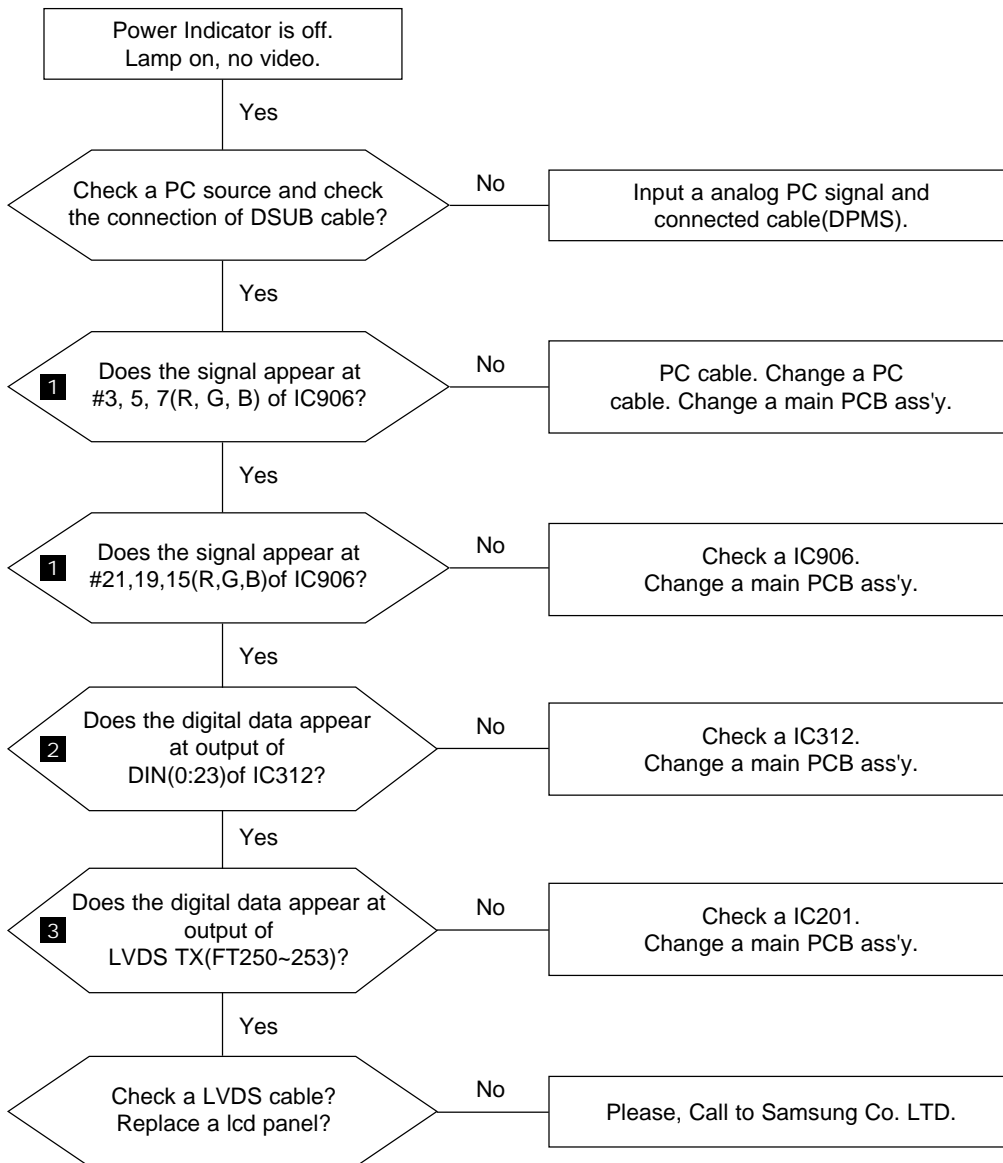

5 Troubleshooting

5-1 No Power

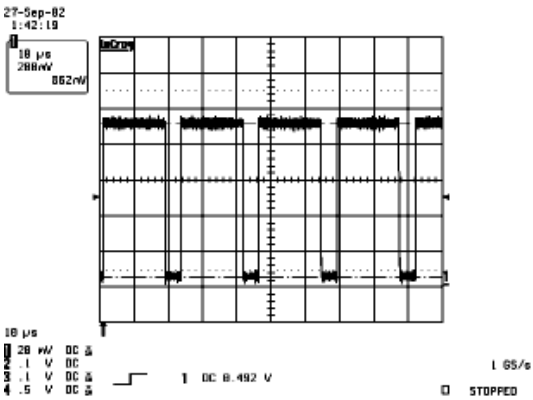


5-2 No Video (Analog PC Signal)

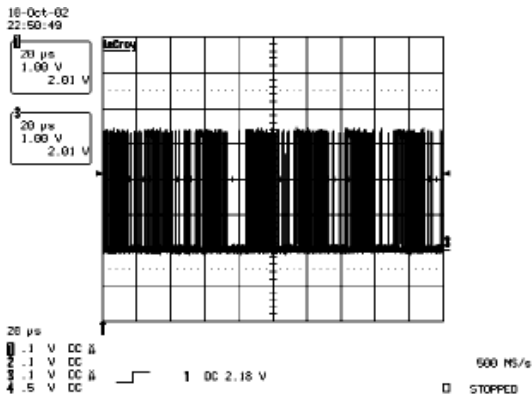


WAVEFORMS

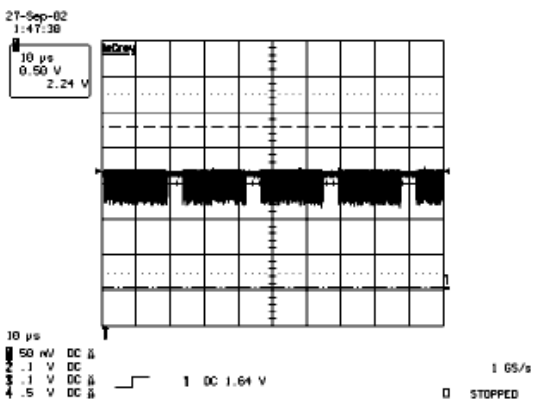
1 R,G,B Output Signal of IC906



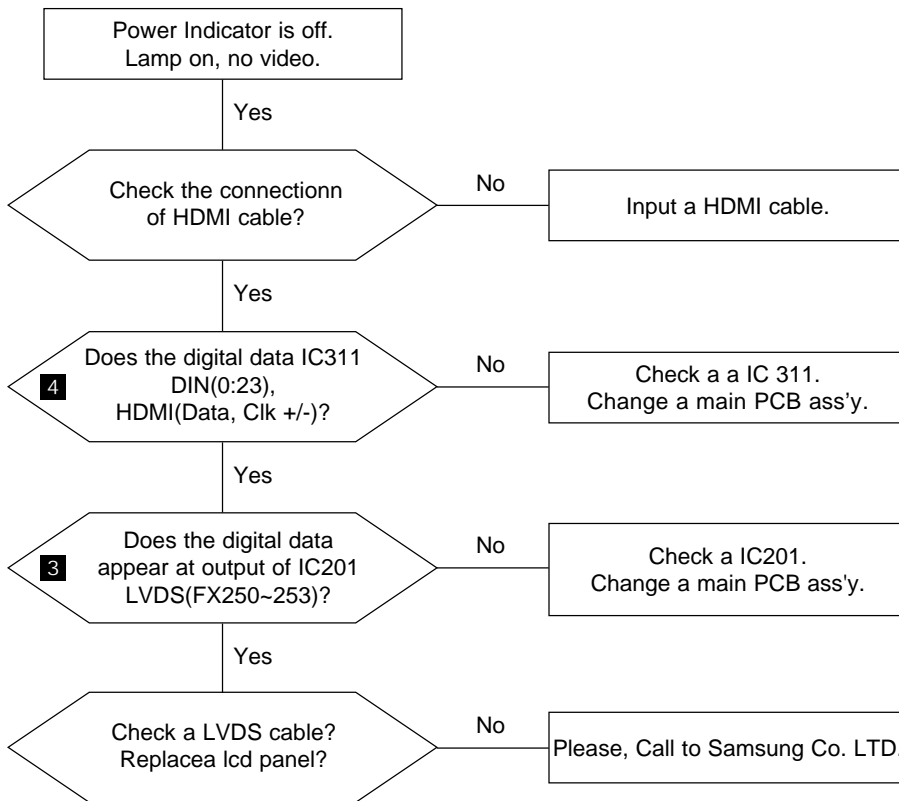
2 R,G,B Output Signal of IC312



3 Digital Output Data of IC201

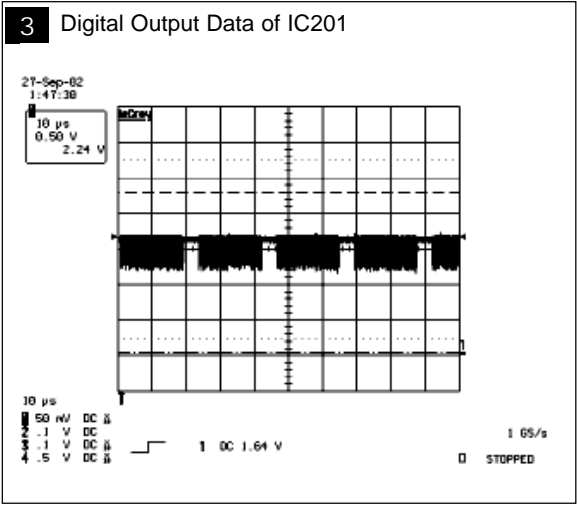


5-3 No Video (HDMI-Digital Signal)_EXECT 23'

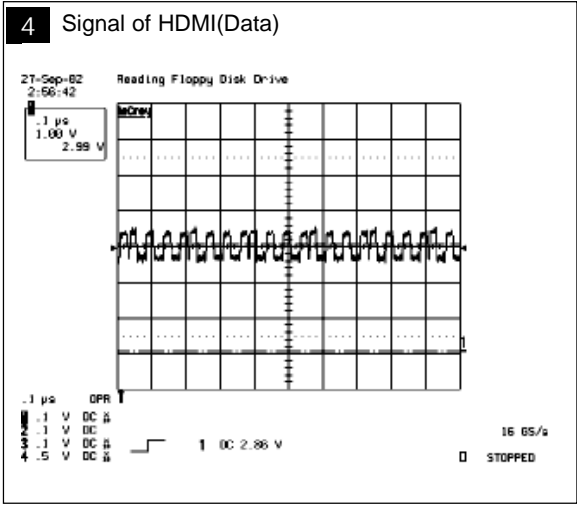


WAVEFORMS

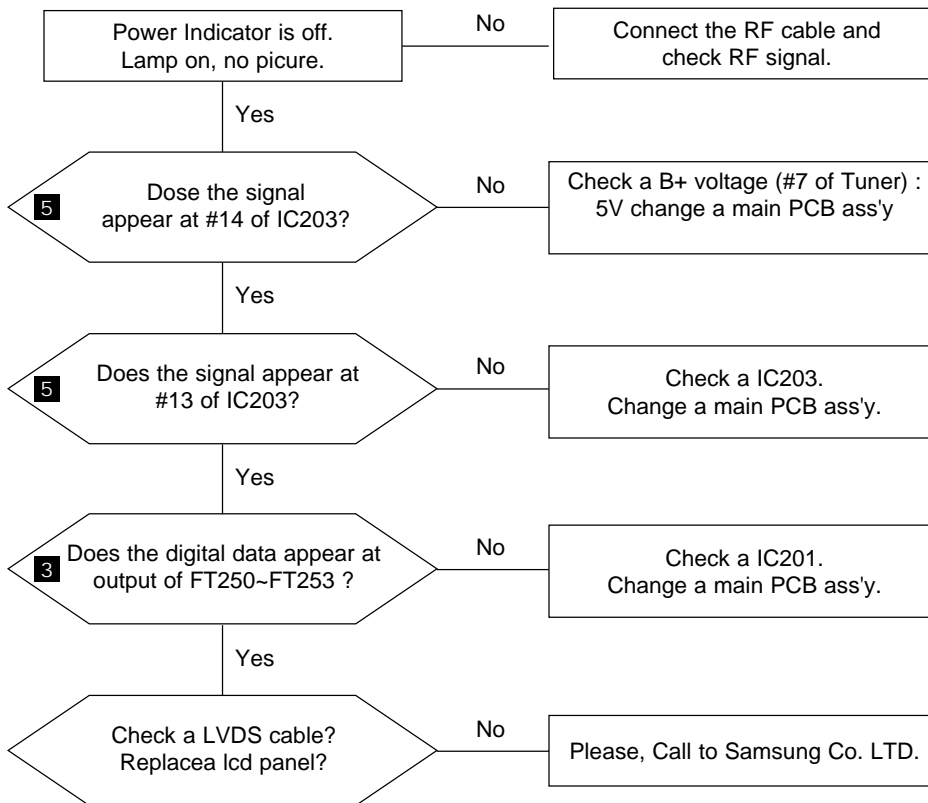
3 Digital Output Data of IC201



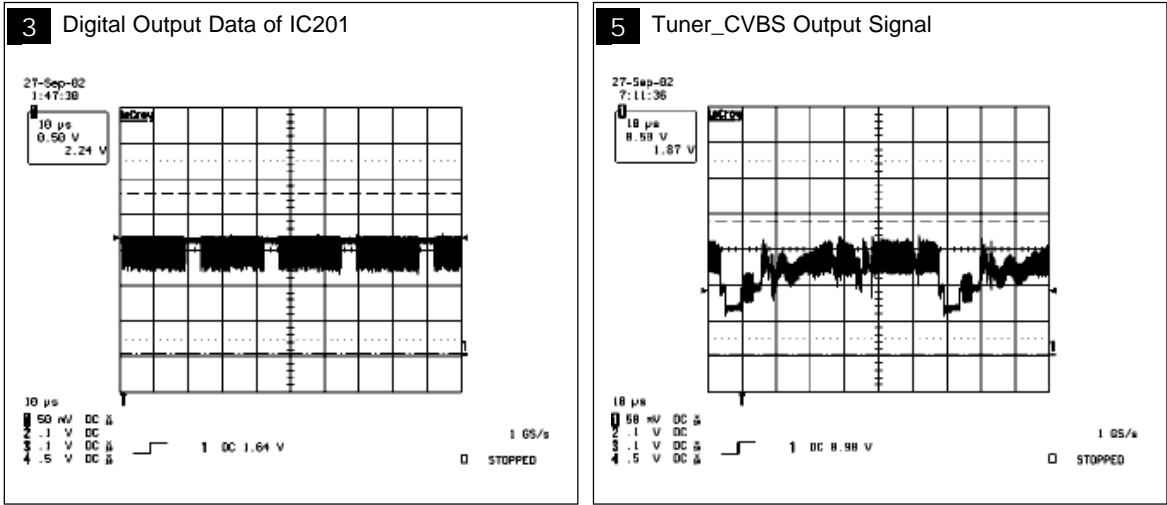
4 Signal of HDMI(Data)



5-4 No Picture (Tuner_CVBS)

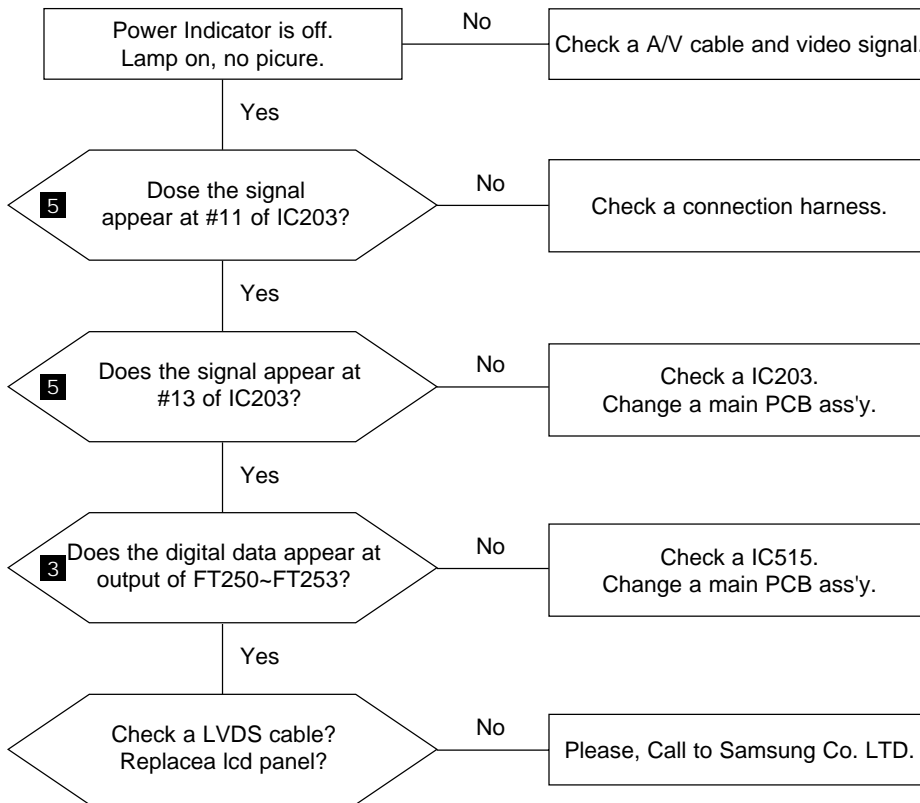


WAVEFORMS



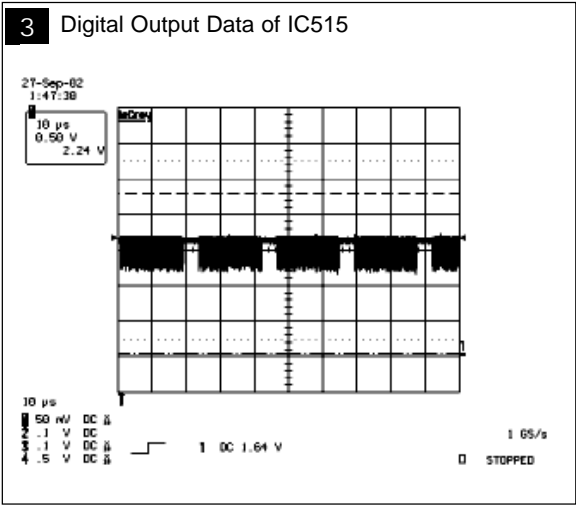
5 Troubleshooting

5-5 No Picture (Video_CVBS)

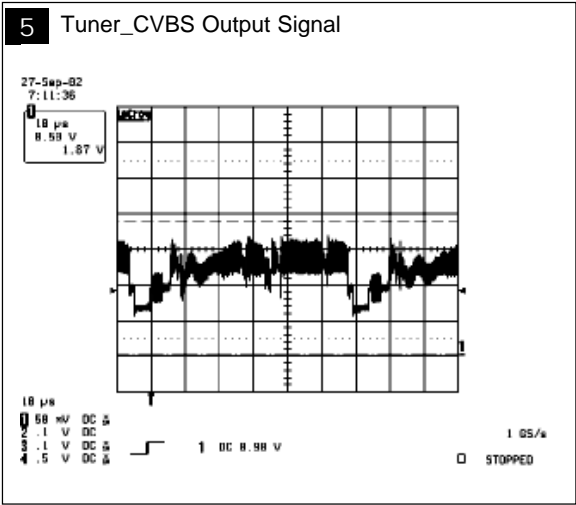


WAVEFORMS

3 Digital Output Data of IC515

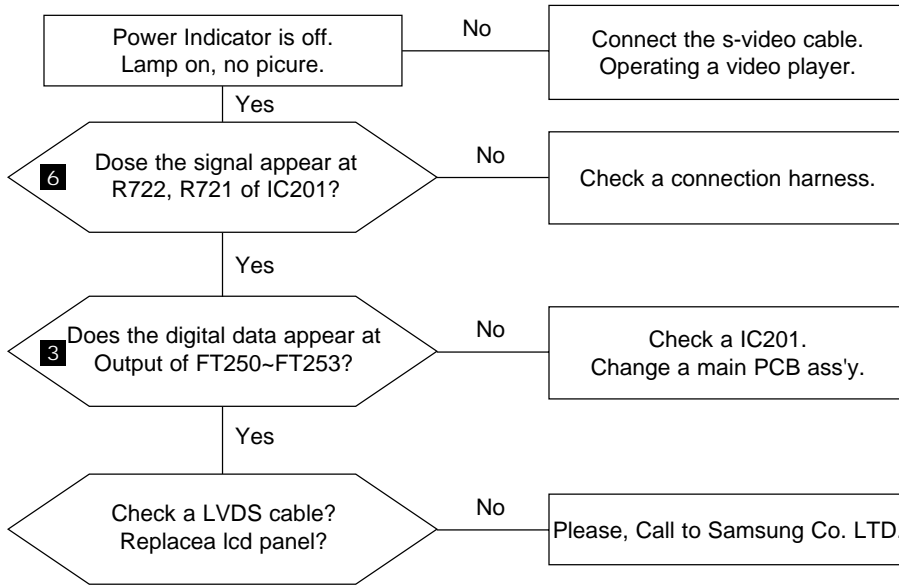


5 Tuner_CVBS Output Signal



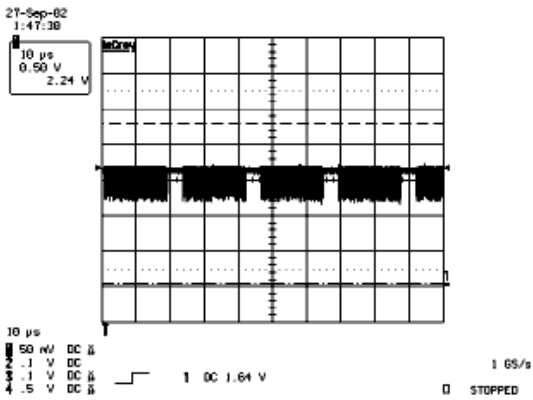
5 Troubleshooting

5-6 No Picture (S-VIDEO_Y,C)

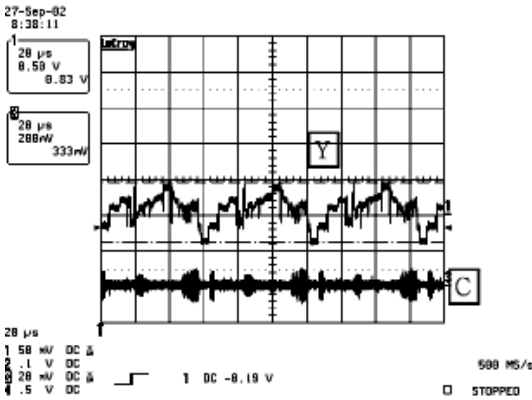


WAVEFORMS

3 Digital Output Data of IC201

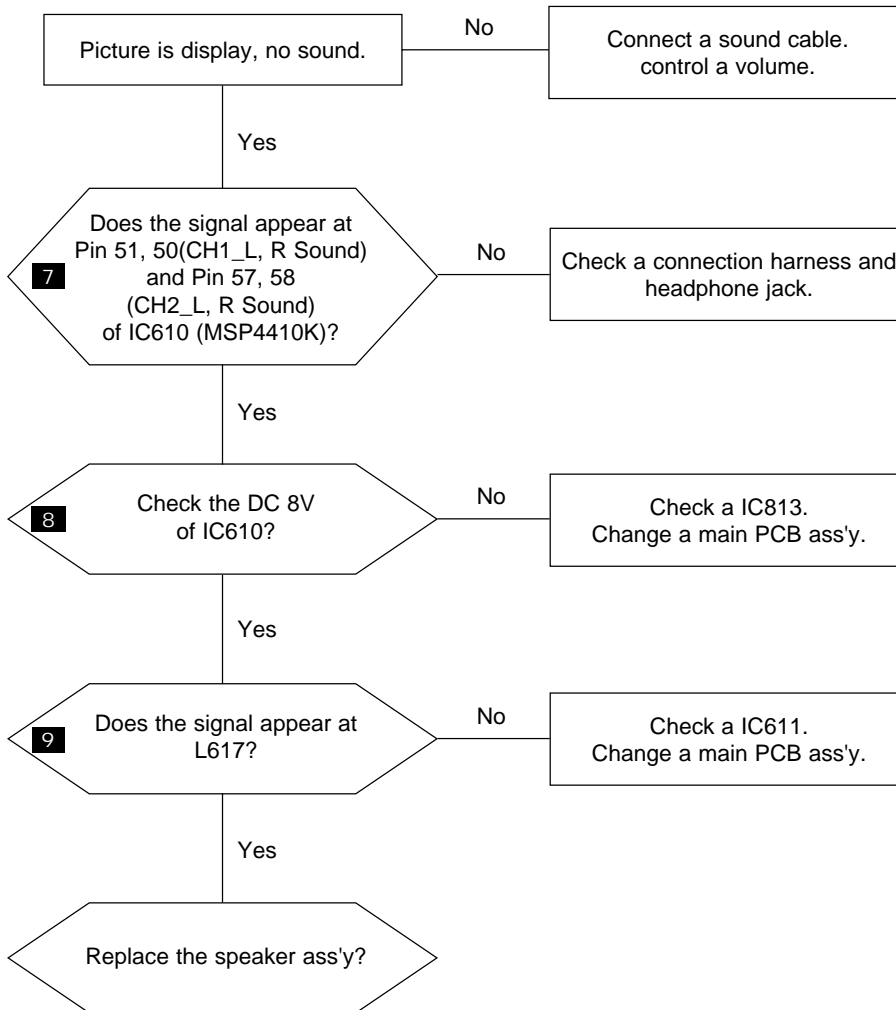


6 Analog Signal(Y,C) to IC201



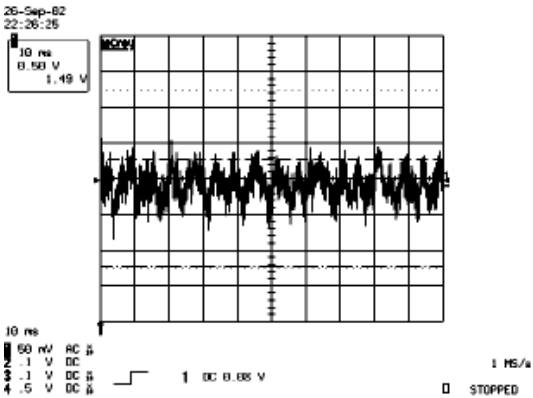
5 Troubleshooting

5-7 No Sound

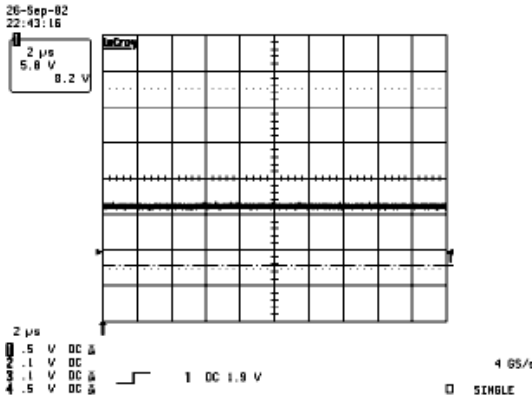


WAVEFORMS

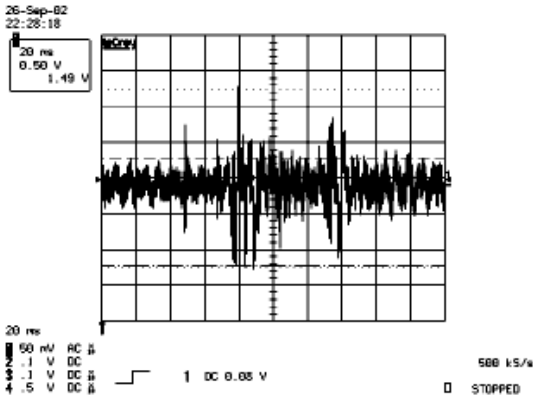
7 The Signal are Inputed to IC610



8 DC +8V



9 Output WaveForm



5 Troubleshooting

Memo