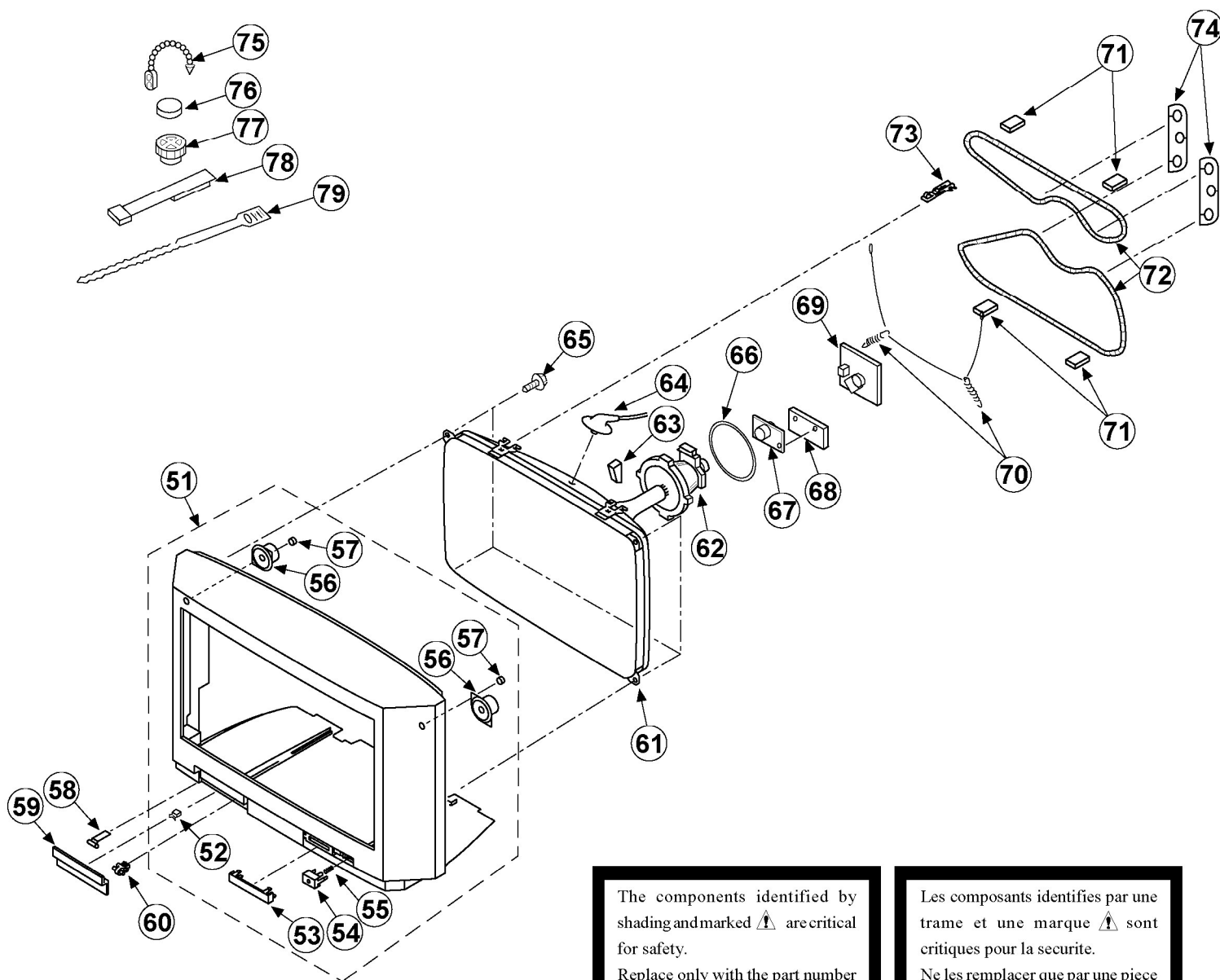







6-2. PICTURE TUBE



REF NO	PART NO	DESCRIPTION	REMARK	REF NO	PART NO	DESCRIPTION	REMARK
51	A-1603-043-A	BEZNET ASSY	52-57	67	1-452-724-22	COIL, NA ROTATION (RT-165)	
52	4-047-464-01	CATCHER PUSH		68	*A-1644-075-A	VM BOARD, COMPLETE	
53	4-203-539-01	WINDOW ORNAMENTAL		69	*A-1638-092-A	C BOARD, COMPLETE	
54	4-203-540-01	BUTTON, POWER		70	4-369-318-31	SPRING, TENSION	
55	4-202-964-01	SPRING		71	*4-203-390-01	CUSHION, DGC	
56	1-504-418-21	SPEAKER (5CM)		72	 1-411-893-11	COIL DEGAUSSING	
57	4-039-356-01	SCREW(3X12), (+) BV TAPPING		73	4-202-463-01	CLIP, DGC (25")	
58	4-045-250-01	DAMPER		74	*4-050-252-01	SPACER, DGC	
59	4-203-542-01	DOOR, CONTROL		75	4-308-870-00	CLIP, LEAD WIRE	
60	4-202-555-01	SHAFT, DOOR		76	1-452-032-00	MAGNET, DISK; 10MM Ø	
61	 8-737-763-05	PICTURE TUBE (SD-284T) (W66LGY011X)		77	1-452-094-00	MAGNET, ROTATABLE DISK; 15MM Ø	
62	 8-451-433-11	DEFLECTION YOKE (Y28GICM)		78	X-4387-214-1	PERMALLOY ASSY, CORRECTION	
63	3-704-495-01	SPACER, DY		79	3-701-007-00	BAND, BINDING	
64	 1-251-317-31	CAP ASSY, HIGH-VOLTAGE					
65	4-036-188-01	SCREW (M), PT					
66	 8-453-005-31	NECK ASSY PICTURE TUBE (NA297-M3)					